

WFBLE.DTU.PlugPro

Quick Installation Guideline

WFBLE.DTU.PlugPro-24



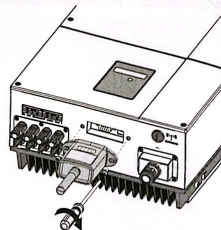
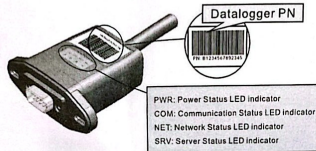
iOS



Android

1. Installation

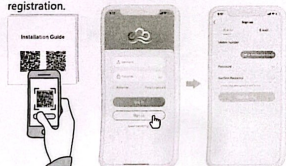
- ① Align the serial port of the Wi-Fi Plug Pro with the inverter and plug it in tightly.
- ② Fasten the Wi-Fi Plug Pro to the inverter with the screw.
- ③ Confirm the status of the LED indicator (After step2,3, when 4 LED indicators keep on, showing the normal working status).



2. Register an account and add items

2.1 Register an account

- ① Scan the QR code on the cover of the Quick Installation Guide and download the APP.
- ② Open the APP, click the "register" button, and fill in the relevant information as prompted to complete the registration.



2.2 Add items

- ① Log in to the APP, select the "Monitor" menu, and click the "Add Project" button to create a project; (Note: Click the "+" button in the upper right corner to enter the "Add Project" page.)
- ② After completing the project-related information according to the requirements and prompts, click "Finish" to complete the project creation.



Powered by

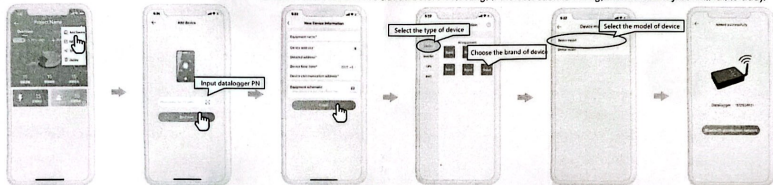


CamScanner

3. Add device and Bluetooth configuration

3.1 Add device

① Enter the built project, click the "..." button in the upper right corner, and select "Add Device".



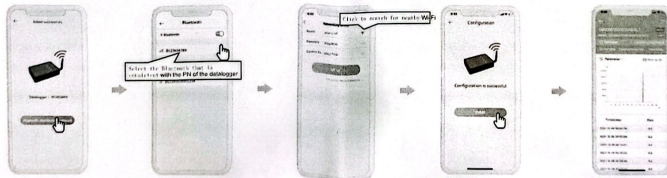
② Enter the PN number of the data logger, click "Bind Now", and fill in the device information according to the prompts;

③ After completing the basic information of the device, select the device type, brand and model of the device to be added and wait until the successful addition interface appears; (Prompt: Please confirm the device type, brand and model of the device to be added before selecting. If the selection is wrong, the device may be Will fail to add).

3.2 Bluetooth distribution network

① After the device is added, you need to perform Bluetooth network configuration on the datalogger, turn on the Bluetooth function of the mobile phone, and then click "Bluetooth configuration network";

② Enter the "Bluetooth connection" interface and select the Bluetooth with the same PN of the datalogger for Bluetooth pairing;



③ After the pairing is successful, connect the datalogger to the router Wi-Fi, click the Wi-Fi button on the right side of the router Wi-Fi that can communicate with the data logger to transmit data to the cloud.

④ After the network configuration is completed, click "Enter Device" to monitor the device and view the device data (it takes a certain time for the device to go online and data transmission, please wait patiently).

Powered by



CamScanner